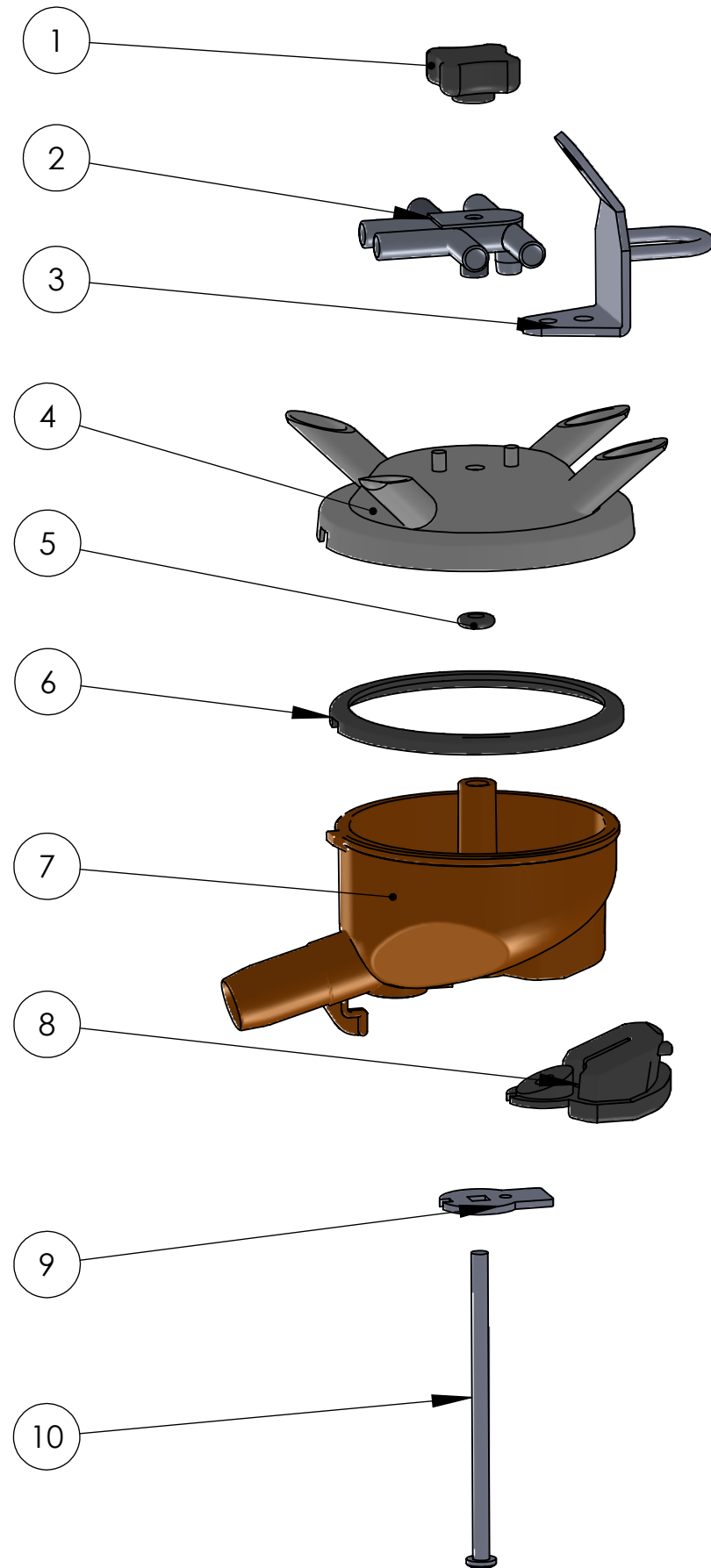


300 E claw without valve

- #14200 - Replacement 300e claw less valve ,SxS, plastic tee
 - #14201 - Replacement 300e claw less valve, SS, 9/32", SxS
 - #14202 - Replacement 300e claw less valve, SS,9/32", BxF
 - #14203 - Replacement 300e claw less valve,SS,3/8 x 1/4, BxF
 - #14204 - Replacement 300e claw less valve,SS,3/8 x 9/32,BxF
 - #14205 - Replacement 300e claw less valve,plastic,9/32",BxF
- For Non-vented use -NV behind the part number



ITEM	PART NUMBER	DESCRIPTION	QTY
1	14313	Black nut	1
2	14320	Stainless 9/32" x 9/32" Side to Side Tee	
	14324	Stainless 9/32" x 9/32" Back to Front Tee	
	14321	Stainless 3/8" x 3/8" Back to Front Tee	
	14323	Stainless 3/8" x 1/4" Back to Front Tee	
	14336	Stainless 1/4" x 1/4" Back to Front Tee	
	14309	Plastic 9/32" x 9/32" Side to Side Tee	
	14335	Plastic 9/32" x 9/32" Back to Front Tee	
3	14312	Stainless top hanger with loop	1
	14346	Stainless to hanger with hook	
4	14316	Stainless 300 E top only, vented	1
	14314	Stainless 300 E top only, non-vented	
5	14307	Small gray center gasket	1
6	14305	Bowl gasket	1
7	14350	Bowl without valve	1
8	14306	Rubber bumper	1
9	14318	Stainless flat tab	1
10	14308	Bolt for claw without valve	1
11	13325	Rubber parts kit for claw without valve, (Includes: 5-7, 9, & 10)	